

# NPA160S-12H

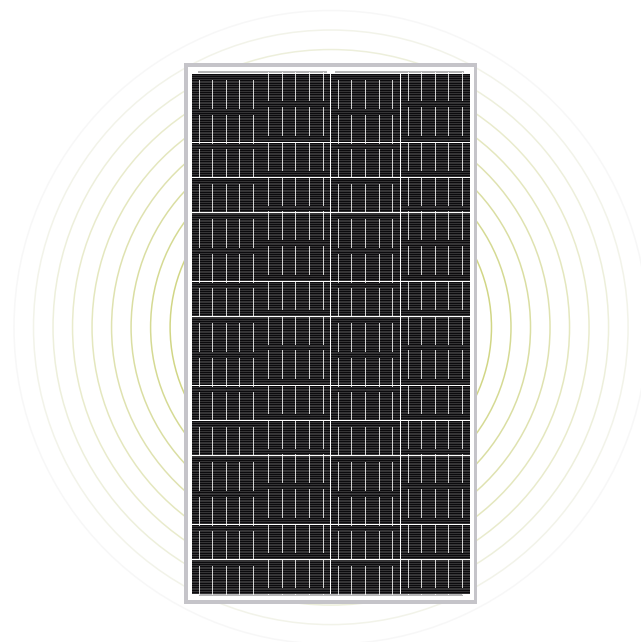
## Monocrystalline Module



### ELECTRICAL CHARACTERISTICS

|   |                   |
|---|-------------------|
| Type                                    | NPA160S-12H       |
| Power Output(W)                         | 160W              |
| Voltage MPP Vmp(V)                      | 16.77V            |
| Current MPP Imp(A)                      | 9.30A             |
| Voltage Open Circuit Voc(V)             | 19.83V            |
| Short Circuit Current Isc(A)            | 9.75A             |
| Temperature Coefficient Of Voc          | -[80±10]mV/°C     |
| Temperature Coefficient Of Isc          | (0.065±0.015)%/°C |
| Temperature Coefficient Of Power        | -(0.5±0.05)%/°C   |
| NOCT (Air 20°C; Sun 0.8kW/m² wind 1m/s) | 47±2°C            |

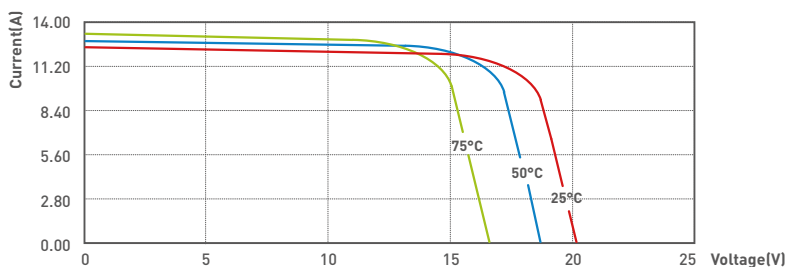
STC: 1000W/m² Irradiance, 25°C module temperature, AM1.5g spectrum according to EN 60904-3



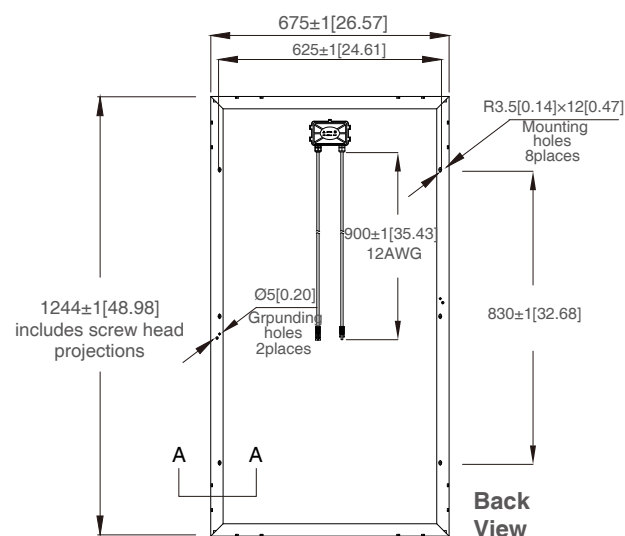
### MECHANICAL CHARACTERISTICS

|                             |   |
|-----------------------------|---|
| Cells                       | Monocrystalline Silicon                   |
| Solar Cells Grade           | Class A High Efficiency                   |
| Module Dimension(mm/in.)    | 1244[48.98]x675[26.57]x35[1.38]           |
| Weight(kg/lbs)              | 10.38[22.88]                              |
| Packing Information(mm/in.) | 1298[51.10]x727[28.62]x63[2.48]/(1pc/ctn) |

### I-V CURVES (Irradiance: AM1.5, 1km/m²)



\*Specifications subject to technical changes and tests.  
NEWPOWA reserves the right of final interpretation.



Dimensions in brackets are in inches.  
Un-bracketed dimensions are in millimeters.  
Unit: mm[in.]



702-628-7600



sales@newpowa.com



www.newpowa.com



1460 E Cedar St, Ontario, CA 91761



**Newpowa**  
BE WISE GO SOLAR